

Arts at St. Bede's 2017 – 2018 Season Music that Sings to the Heart

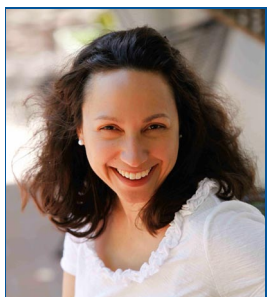
All events begin at 4:00pm.



Sunday, September 24

Candlelight Evensong & organ recital

The choir of St. Bede's & organist Rani Fischer



The choir of St. Bede's & organist Rani Fischer will offer a service of Evensong drawing on music of the English Romantic period, including Ralph Vaughan Williams's *Magnificat* & *Nunc Dimittis in C*, Arthur Baynon's *When rooks fly homeward*, and Charles Villier Stanford's *Pray that Jerusalem may have peace*. Rani's recital will feature the *Suite médiévale* by Jean Langlais, Benjamin Britten's *Prelude and Fugue on a Theme of Victoria*, *Scherzo* from *Suite for Mechanical Clock* by Ludwig van Beethoven, Nicolas de Grigny's *Hymne Ave Maris Stella*, and two works by J. S. Bach: the *Partita on "O Gott, du frommer Gott"* and *Largo* from *Trio Sonata No. 2*.

Free will offering benefits Episcopal Relief and Development



Sunday, October 29

Clerestory — O Sweet, Spontaneous Earth

The Bay Area's acclaimed 9-man vocal ensemble, presents a musical celebration of the natural world and the wild and beautiful things that inhabit it. In the music of Palestrina, Byrd, Janequin, Howells, Hindemith, Vaughan Williams, and many more, you will be reminded of what nature meant to poets and composers of the past, as well as hear Clerestory's commitment to putting down roots in the musical soil of its own era. This fresh, local, and ultimately sustainable offering of Bay Area song-fare is sure to delight your senses.

Tickets \$20 general admission/\$15 seniors/\$10 students
available at the door or in advance

Sunday, November 19

Collage Vocal Ensemble —  VOCAL ENSEMBLE
Light and Shadow

With its characteristic mix of musical styles, Collage presents pieces that rejoice in the light and examine what may lurk in the shadows.

Suggested donation \$15; all donations benefit LifeMoves

Advance purchase for many of these events is available:

www.stbedesmenlopark.org/upcoming-arts-events

Sunday, December 10

Kitka — Wintersongs

Few things evoke the magic of the winter holidays as the transcendent splendor of the human voice. *Wintersongs* showcases a treasure-trove of seasonal music ranging from rousing Slavic folk carols to lush, meditative Eastern Orthodox sacred choral works, from pre-Christian incantations for the longest nights of the year to medieval Sephardic Chanukah songs to original new pieces inspired by the beauty and mystery of wintertime.

At door: \$40 center front/\$35 general/\$30 senior/\$15 student

For more information & advance purchase at discount,
see www.kitka.org



Sunday, January 28

Robyn Carmichael, piano



Pianist Robyn Carmichael makes her debut at Arts at St. Bede's in a program of poetry and virtuosity. Lauded in the press, she brings to St. Bede's a program featuring four of the greatest Romantics of the 1830's: Chopin, Schumann, Mendelssohn, and Liszt. Major works include the great B minor Sonata of Chopin and the Tarantella from *Venezia e Napoli* S.162, no. 3.

Tickets \$25 general admission/\$15 students & seniors
available at the door or in advance

Sunday, February 11

Candlelight Evensong & organ recital

Combined choirs & organist Andrew Chislett

Celebrate the waning of winter with music to warm the heart and cheer the soul on the last Sunday before Lent begins. The choirs of St. Bede's and of First Presbyterian Church of Palo Alto join to sing Charles Villiers Stanford's grand and jubilant *Magnificat & Nunc Dimittis*. Mr. Chislett's program will include Mendelssohn's *Sonata Number 2* as well as works by J.S. Bach: *Three Chorale Settings* and the *Sinfonia* from *Cantata 29 (Wir danken dir, Gott)*.

Free will offering benefits Los Ayudantes literacy program



Sunday, March 4

Vajra Voices —

The Practice of Love in Medieval & Modern Music

Vajra Voices presents music of the 14th century master Trouvère Guillaume de Machaut and a new work by Theresa Wong: *To Burst, To Bloom*. In his *Le Lai de la Fonteinne*, Machaut likens the Trinity to a fountain and lauds the Virgin Mary and the chivalric virtuous practice of loving the unattainable. Wong's piece is a setting of six poems by the 12th century female Taoist Immortal, Sun Bu'er intended as meditations on inner alchemy.

Tickets \$20 general admission/\$15 students & seniors available at the door or in advance



Sunday, April 15

Rachelle Perry & Sally Mouzon

Opera arias, duets & art songs



Postponed from last season, this long-awaited program will feature glorious operatic duets. From famous tunes from *Lakmé*, *Così fan tutte*, *Madama Butterfly* and *The Tales of Hoffman* to stunning but lesser known gems from

Serse, *Béatrice et Bénédic*t and *Pique Dame*, it will be an afternoon of *Love of Life*, with all its emotions exquisitely portrayed in song. Ms. Mouzon and Ms. Perry-Ward will be accompanied by the wonderful, well-known, and much-sought-after musician, Mr. Bryan Baker!

Tickets \$25 general admission/\$15 students & seniors available at the door or in advance

Sunday, May 6

Collage Vocal Ensemble

Love Makes the World Go 'Round

Where in the world might you like to travel? Collage Vocal Ensemble will take you on a journey rejoicing in this wonderful emotion common to peoples everywhere.

Suggested donation \$15; all donations benefit the Music in the Schools Foundation



Sunday, June 17

Peter Sykes, organ

The Arts at St. Bede's, in collaboration with the Peninsula/Palo Alto chapter of the American Guild of Organists, presents renowned organist Peter Sykes, whose playing has variously been called "compelling and moving," "magnificent and revelatory," and "bold, imaginative, and amazingly accurate." He is currently Chairman of the Historical Performance Department at Boston University. In 2014 he was invited to join the faculty of the Historical Performance Department at the Juilliard School of Music as its principal instructor of harpsichord. As Peter is famed for having performed the complete works of J.S. Bach for both organ and harpsichord, we know this recital will include some Bach, which always sounds sublime on the 1969 von Beckerath organ at St. Bede's.



Tickets \$20 general admission/\$15 students & seniors available at the door or in advance

Friends of Arts at St. Bede's are underwriters of this concert series. Contributions of any size are welcome, and all contributions of at least \$100 entitle the donor to free admission for two at all series events. Amounts contributed in excess of \$100 are tax-deductible.



- Angels \$100 or more
- Archangels \$150 or more
- Cherubim \$250 or more
- Seraphim \$350 or more

St. Bede's Episcopal Church

2650 Sand Hill Road, Menlo Park, CA 94025

650-854-6555 www.stbedesmenlopark.org